



# Office furniture

for medical centers outfitting

# AyWood Medical Office - integrated unit system of office furniture.

While designing this line we based on the existing solutions of the overseas companies, used our own experience and searched for reasonable process developments.

This line of general office furniture (work desks, cabinets, storage racks and drawer units) is presented as unified units and each of them may be adopted by means of adjustable options.

For example, an office desk may be simple, open or compound type (e.g., nurse work desk), fitted with drawer units, screens or an add-on structure. Add-on structure may accommodate trays or shelves. It can also accommodate a computer monitor that would save a desk's working space.

Meanwhile the dimensions of all items are aligned, which enables their unity and interchangeability. Each kind of furniture and each unit may be adopted for certain working conditions.

Functionality is the main principle of the AyWood Medical Office furniture system. Furniture supports are fitted with cable ducts (enclosed with decorative covers). Desk stiffeners perform cable managing function since they can accommodate group sockets and cable routes. Hidden cable routes will greatly simplify the cleaning process and make it safer. The same function is performed by "transparent" structure that is declared as a basic one for all components of this system.

AyWood Medical Office system provides certain solutions for the following working tasks:

- ◆ Document management in convenient and reliable working space;
- ◆ Separate storage of small accessories;
- ◆ Records administration;
- ◆ Arrangement of individual work stations;
- ◆ Arrangement of group work stations (posts);
- ◆ Modular storage systems.

# Table of contents

<b>Office desks</b>	<b>04</b>
- Fabrication versions	05
- Options	07
- Hinged components of add-on structures	11
- Accessories	13
<b>Office desk file cabinets</b>	<b>20</b>
- Basic case versions	21
- Front face versions	21
- 1X series configurations	22
- 2X series configurations	23
- Cabinets line	24
- File units line	27
<b>Modular storage systems</b>	<b>28</b>
<b>Modular kitchenette</b>	<b>30</b>

# Office desks



# Advantages

This desk is purposed for outfitting of medical offices of physicians within clinics, hospitals and healthcare providers.

## ● CONVENINCE

Wide range of available options allows maximizing the alignment of a work station with individual needs. Desk structure considers hidden commutation wires arrangement.

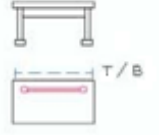
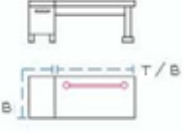
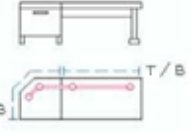
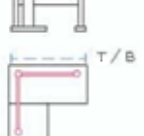
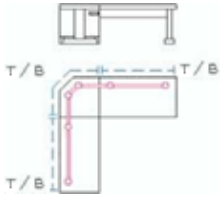
## ● QUALITY

Frame is made of metal with polymer powder coating. Working surface is made of laminated chipboard, 22 mm. Adjustable supports enable compensation of floor irregularities.

## ● SAFETY


Structure's "transparency" improves cleaning characteristics and does not interfere into air exchange. Table board edges are protected with anti-collision PVC strip, 22 mm.

# Fabrication versions

Code	Appearance	Dimensions	Description
CKB-1-900 w		900x600x730	This item consists of two supports, stiffener and table board.
CKB-1-1200 w		1200x600x730	
CKB-1-1500 w		1500x600x730	
CKB-2-1350 w		1350x600x730	This item consists of support, stiffener, mounting bracket, rolling file cabinet (450 mm) and table board 900/ 1200/ 1500 mm.
CKB-2-1650 w		1650x600x730	
CKB-2-1950 w		1950x600x730	
CKB-2.1-1500 w		1500x600x730	This item consists of support, stiffener, mounting bracket, corner file cabinet (600 mm) and table board 900/ 1200/ 1500 mm.
CKB-2.1-1800 w		1800x600x730	
CKB-2.1-2100 w		2100x600x730	
CKB-3-1515 w		1500x1500x730	This item consists of three supports, two stiffeners and two table boards of standard size 900/ 1200/ 1500 mm.
CKB-3-1518 w		1500x1800x730	
CKB-3-1521 w		1500x2100x730	
CKB-3.1-1515 w		1500x1500x730	This item consists of corner file cabinet (600 mm), two supports, two stiffeners and two table boards of standard size 900/ 1200/ 1500 mm.
CKB-3.1-1815 w		1800x1500x730	
CKB-3.1-2115 w		2100x1500x730	
CKB-3.1-1818 w		1800x1800x730	
CKB-3.1-2118 w		2100x1500x730	
CKB-3.1-2121 w		2100x2100x730	

Schematic drawing legend:

 - add-on structure option is available

 - screen option is available (T – top screen, B – bottom screen, T/ B – both options available)



## Office desk CKB-1-1500w + options

- Add-on structure (L=1500); Wall-adjacent piece (metal);
- Bottom screen (metal); Top screen (metal + laminated chipboard);
- Computer unit platform (R);
- Keyboard shelf;
- VESA bracket (for computer monitor mounting);
- Mounting panel (2 pcs.);
- Document shelf;
- Tray 305x220 mm (3 pcs.);
- Rolling file cabinet ТМП-01.1w

# Office desks options



*Top screen*

To be installed under table board, encloses bottom part of a desk. Mounting is fastened to supports by means of brackets.

**Available versions:**

- Metal (with polymer coating)
- Lam. chipboard (16 mm, PVC edge 2 mm)
- Plexiglass (6 mm, color: opal)



*Bottom screen*

**To be installed on an add-on structure** encloses bottom part of a desk. Mounting is fastened to supports by means of brackets.

**Available versions:**

- Metal + laminated chipboard
- Lam. chipboard (16 mm, PVC edge 2 mm)
- Plexiglass (6 mm, color: opal)



*File cabinets*

Improve functionality of work space

**Available versions:**

- Rolling type (350x465x595 mm)
- Attachable type (450x600x730 mm)
- Corner type (600x600x730 mm)



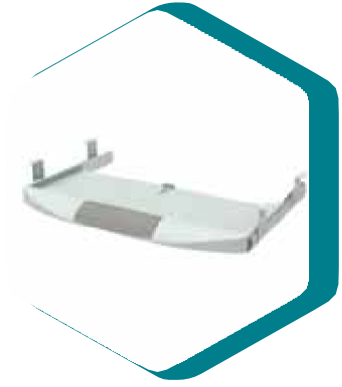
*Add-on structure*  
*Height: 355 mm*

Add-on structure is purposed for improvement of a desk functionality by means of arrangement of hinged components (trays, shelves, brackets). As per desk width the following versions are available:  
- 900/ 1200/ 1500 mm.



*Computer unit platform*

Purposed for arrangement of personal computer unit. Mounting is to be attached to a desk support on the left/ right (depending on the version).



*Keyboard shelf*

Purposed for arrangement of keyboard under table board; this would save a desk's working space.



### Office desk CKB-2-1650w + options

- Desk CKB-2-1650w rests on rolling file cabinet T-1.02w, type 3;
- Bottom screen (laminated chipboard);
- Wall-adjacent piece (laminated chipboard);
- Add-on structure (L=1200 mm);
- Mounting panel (2 pcs.);
- Tray 305x220 mm (2 pcs.);
- Tray 305x113 mm;
- Document shelf;
- Rolling file cabinet ТМП-01.2w



# Office desks options



Wall-adjacent piece

This part limits a desk's working space. Prevents small accessories dropping from the backside.

Available versions:

- Metal (with polymeric coating)
- Laminated chipboard (16 mm, PVC edge 2 mm)



Separation screen

To be installed on add-on structures of combined desks.

Screen is to be mounted to supports by means of brackets.



Dimensions

Material: laminated chipboard (16 mm + PVC edge 2 mm)

As per desk width the following versions are available:

Length: 900/ 1200/ 1500 mm



*This figure specifies the following configurations:*

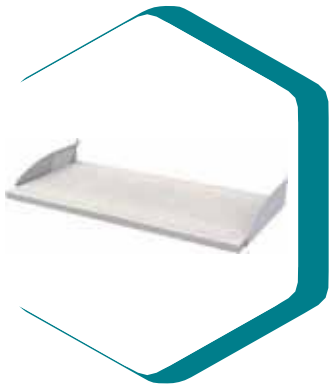
- Desk CKB-2.1-1800w; rests on corner file cabinet T-3.02w, type 2;
- Desk CKB-1-1200w;
- Add-on structure L=1200 (2 pcs.);
- Separation screen (1200).



## Office desk CKB-3-1515w + options

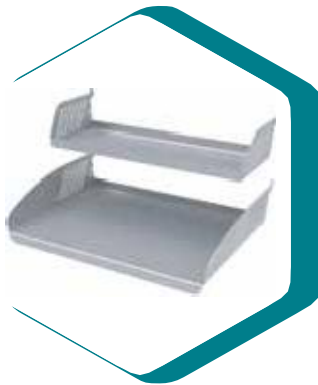
- ◆ Computer unit platform;  
Bottom screen (metal);  
Keyboard shelf;
- ◆ Wall-adjacent piece (metal);  
Add-on structure (L=1500);  
Top screen (plexiglass);
- ◆ Wall-adjacent piece (laminated chipboard);  
Add-on corner structure (L=1500);
- ◆ VESA bracket (for computer monitor mounting);  
Tray 305x113 mm;
- ◆ Mounting panel;  
Document shelf;  
Tray 305x220 mm (1 pce.);
- ◆ Mounting profile (2 pcs.);  
Shelf (L=960);  
Shelf (L=515);
- ◆ Rolling file cabinet ТМП-01.4w

# Hinged components for office desk configurations



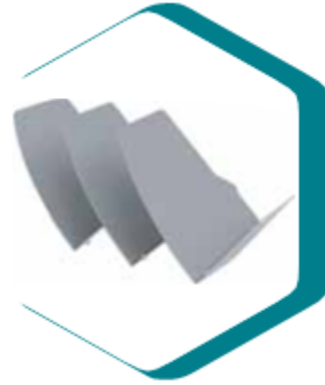
*Shelf 515x250 mm*

Purposed for storage of documents and different accessories.  
This item is made of steel with polymer coating and laminated chipboard (16 mm, PVC edge 2 mm).  
Shelf length may be customized (to be negotiated during order confirmation).



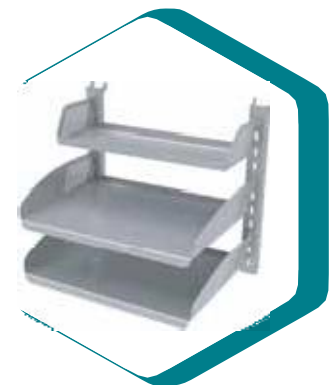
*Tray 305x220 (113) mm*

220 mm tray is purposed for arrangement of documents (A4 format).  
113 mm tray is purposed for arrangement of different small accessories).



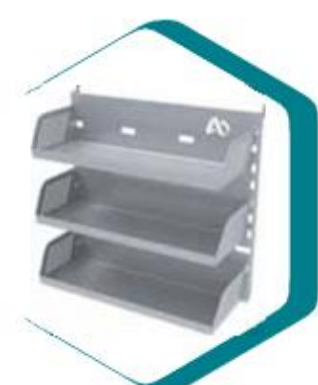
*Document shelf*

Purposed for arrangement of documents (registers).  
To be installed on a mounting panel or directly to an add-on structure.



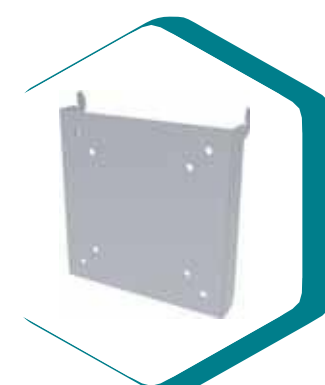
*Mounting panel*

Purposed to combine a number of trays into a unit (located under each other).  
This item is made of steel with polymer coating.



*Mounting profile*

This profile is to improve an add-on structure's functionality, allowing to align a work station with employees' individual needs.  
Perforation spacing: 25 mm.



*VESA bracket*

Purposed for monitors hinging.  
Enables improvement of working surface usage.  
Mounting standard:  
VESA MIS - D 75/100.



## Office desk CKB-3.1-2115w + options

- Left-hand unit (L=900mm):
  - Bottom screen (metal);
  - Wall-adjacent piece (laminated chipboard);
  - Add-on structure (L=900);
  - Top screen (plexiglass);
- Corner file unit T-3.01w, type 2;
- Right-hand unit (L = 1500 mm):
  - Computer unit platforms (R);
  - Bottom screen (metal);
  - Keyboard shelf;
  - Wall-adjacent piece (metal);
  - Add-on structure (L=1500);
  - Top screen (plexiglass);
- Hinged components:
  - VESA bracket (for computer monitor mounting);
  - Mounting panel (2 pcs.);
  - Document shelf;
  - Tray 305x113 mm;
  - Tray 305x220 mm (3 pcs.).

# Accessories



*Support v11*

To be used without bottom screen

Components:

- welded support (L/R);
- face cover;
- standard cover;



*Support v21*

To be used together with bottom screen

Components:

- welded support (L/R);
- face cover;
- power panel (L/R);



*Stiffener's support*

To be used together with desks of series CKB-2, CKB-2.1, CKB-3, CKB-3.1;

Enables joining of stiffener/ table board to attachable or corner file cabinet.



*Support v12*

To be used without bottom screen

Components:

- welded support (L/R);
- face cover;
- small standard cover;
- PC platform (L/R);



*Support v22*

To be used together with bottom screen

Components:

- welded support (L/R);
- face cover;
- small power panel (L/R);
- PC platform (L/R);



*Screen bracket*

To be used together with desks of series CKB-2, CKB-2.1, CKB-3, CKB-3.1;

Enables joining of bottom screen (metal/ plexiglass) to attachable or corner file cabinet.

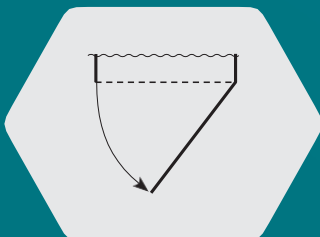
**Reference:** L - left-hand version, R - right-hand version.

# File cabinets for office desks

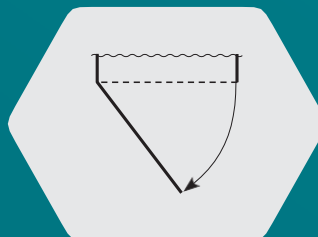


## Hinged doors versions

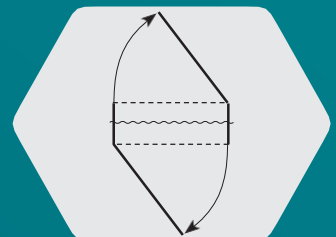
Right



Left



Double-sided



# Advantages

File cabinets are purposed for outfitting of offices of hospitals and healthcare providers. These items are designed to improve functionality of a working space.

## CONVENIENCE

- 3 versions available:
  1. Rolling file cabinets (350x465x595 mm)
  2. Attachable file cabinets (450x600x730 mm)
  3. Corner file cabinets (600x600x730 mm)Attachable and corner file cabinets widen a desk's working space. This item can be used both separately and as a part of a unit.

## QUALITY

- Excellent movability of attachable is performed by means of usage of double self-castoring wheel assemblies. Attachable and corner file cabinets are fitted with reinforced metal supports 100 mm in height.

## SAFETY

- Stability of attachable and corner file cabinets is provided by means of adjustable supports (they compensate floor irregularities). Attachable file cabinets are fixed by means of reliable brake system. Edges of table boards and front faces are protected with anti-collision 2 mm PVC strip.

# Rolling file cabinets



TMП-01.1w

File cabinet is fitted with hinged door (lockable type).  
Quick-release adjustable shelf: yes.  
Front wheels are fitted with brakes.  
Versions available: left/ right sided.



TMП-01.2w

File cabinet is fitted with three pullout drawers.  
Pulling out is performed by means of ball-type slides.  
Upper drawer is lockable type.  
Inner dimensions of drawers: 280x410x100 mm.



TMП-01.3w

File cabinet is fitted with two pullout drawers.  
Pulling out is performed by means of ball-type slides.  
Inner dimensions of upper drawers: 280x410x100 mm,  
280x410x280 mm - lower drawer.



### Rolling file cabinet ТМП-01.4w

- File cabinet with pullout drawer and hinged door.
- Pulling out is performed by means of ball-type slides.
- Inner dimensions of drawer: 280x410x100 mm. Drawer is lockable type.
- Front wheels are fitted with fixing system.
- Versions available: left/ right sided.



# Attachable file cabinets



*T-1.01w, type 1*

File cabinet with hinged door.  
Quick-release adjustable shelf: yes  
(to be installed on cleats in 3 pos.).  
Versions available: left/ right sided.



*T-1.02w, type 1*

File cabinet with three pullout drawers.  
Pulling out is performed by means of ball-type slides.  
Inner dimensions of drawers: 355x510x120 mm.



*T-1.02w, type 2*

File cabinet with two pullout drawers and cut-out compartment.  
Pulling out is performed by means of ball-type slides  
Inner dimensions of drawers: 413x563x195 mm.



*T-1.02w, type 3*

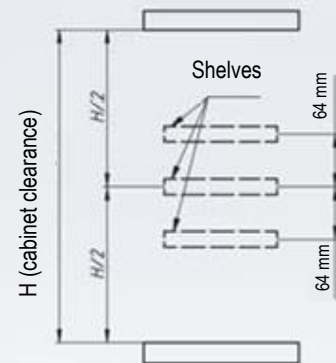
File cabinet with pullout drawer and hinged door.  
Fitted with quick-release adjustable shelf.  
Available versions: left/ right sided.



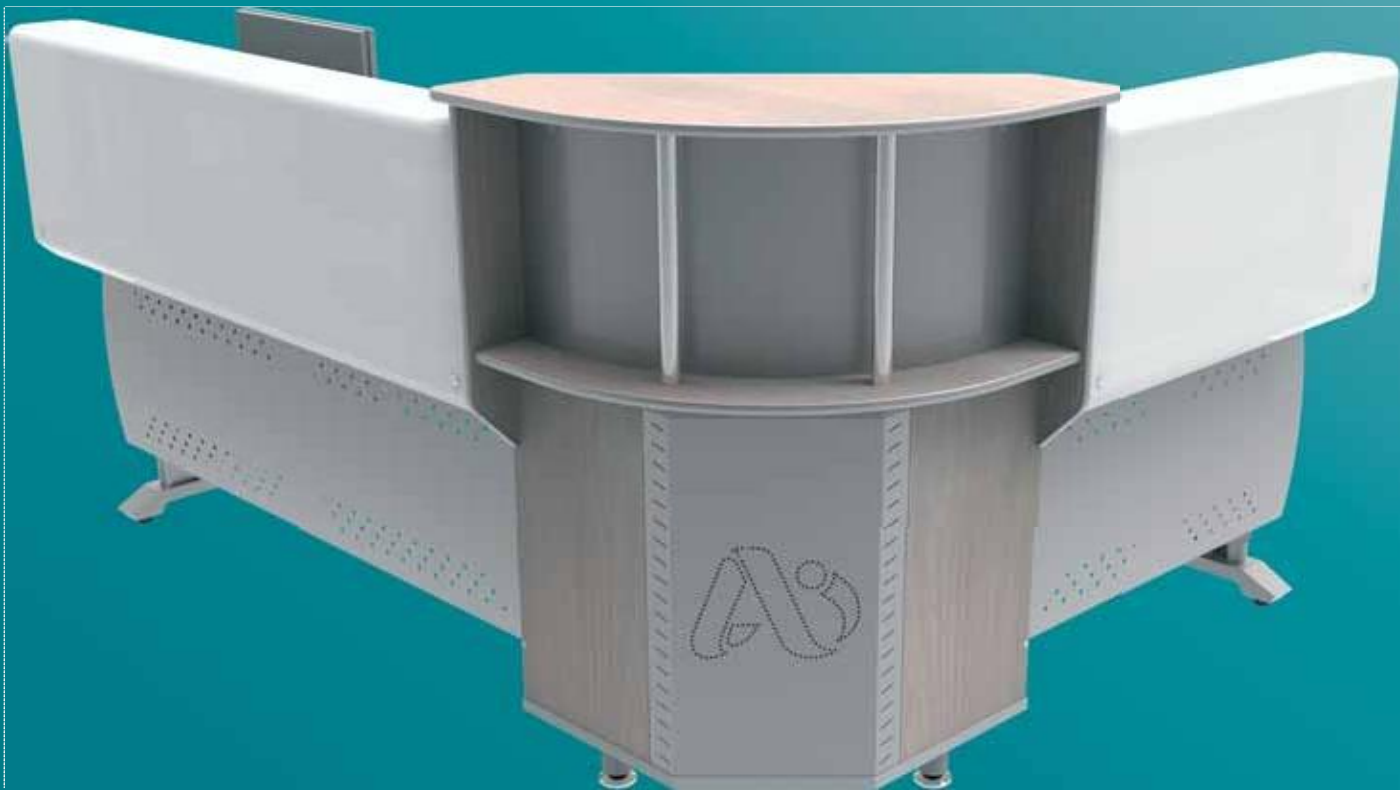
*T-1.01w, type 2*

File cabinet with cut-out compartment and hinged door.  
Fitted with quick-release adjustable shelf.  
Available versions: left/ right sided.

Arrangement of removable shelves inside the cabinet



This schematic is applicable for:  
T-1.01w, type 1,  
T-1.01w, type 2,  
T-1.02w, type 3.



## Office desk CKB-3.1-2115w + options

- Left-hand unit (L=900 mm):
  - Bottom screen (metal);
  - Wall-adjacent piece (laminated chipboard);
  - Add-on structure (L=900);
  - Top screen (plexiglass);
- Corner file unit T-3.01w, type 2;
- Right-hand unit (L = 1500 mm):
  - Computer unit platform (R);
  - Bottom screen(metal);
  - Keyboard shelf;
  - Wall-adjacent piece (metal);
  - Add-on structure (L=1500);
  - Top screen (plexiglass);
- Hinged components:
  - VESA bracket (for computer monitor mounting);
  - Mounting panel (2 pcs.);
  - Document shelf;
  - Tray 305x113 mm;
  - Tray 305x220 mm (3 pcs.).

\* reversed side view is provided at page 12

# Corner file cabinets



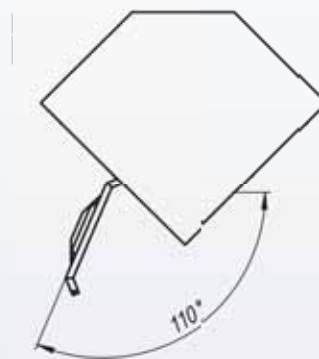
*T-3.01w, type 1*

File cabinet with hinged door. Standard door (reversible type) is to be fixed by means of neodymium magnet. Door material: metal with polymer Coating. File cabinet rests on three adjustable supports (100 mm).



*T-3.02w, type 1*

File cabinet with three pullout drawers. Inner dimensions of drawers: 340x410x120 mm. Pulling out is performed by means of ball-type slides. **File cabinet dimensions: 600x600x730 mm.**



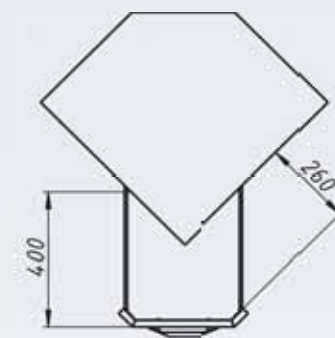
*T-3.01w, type 2*

File cabinet with hinged doors and corner add-on structure. Screen is made of metal with polymer coating. Case material: laminated chipboard, 16 mm, edges are processed with PVC.



*T-3.02w, type 2*

File cabinet with three pullout drawers and add-on structure. **Dimensions of file cabinet with add-on structure: 705x705x1145 mm.**

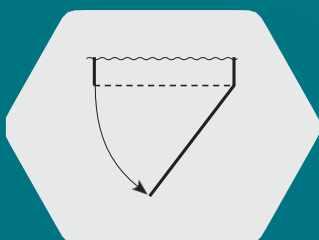


# General purpose cabinets and drawer units

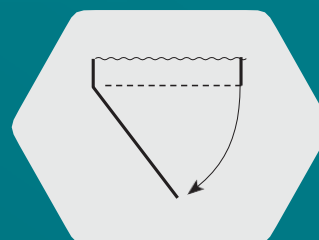


## Hinged doors versions

Right-side



Left-side



# Advantages

*This furniture is purposed for outfitting of medical offices of physicians within clinics, hospitals and healthcare providers and complies with requirements of GOST R 50444-92. Item is designed for storage of medicaments, medical instruments, hospital documents and patients' records data.*

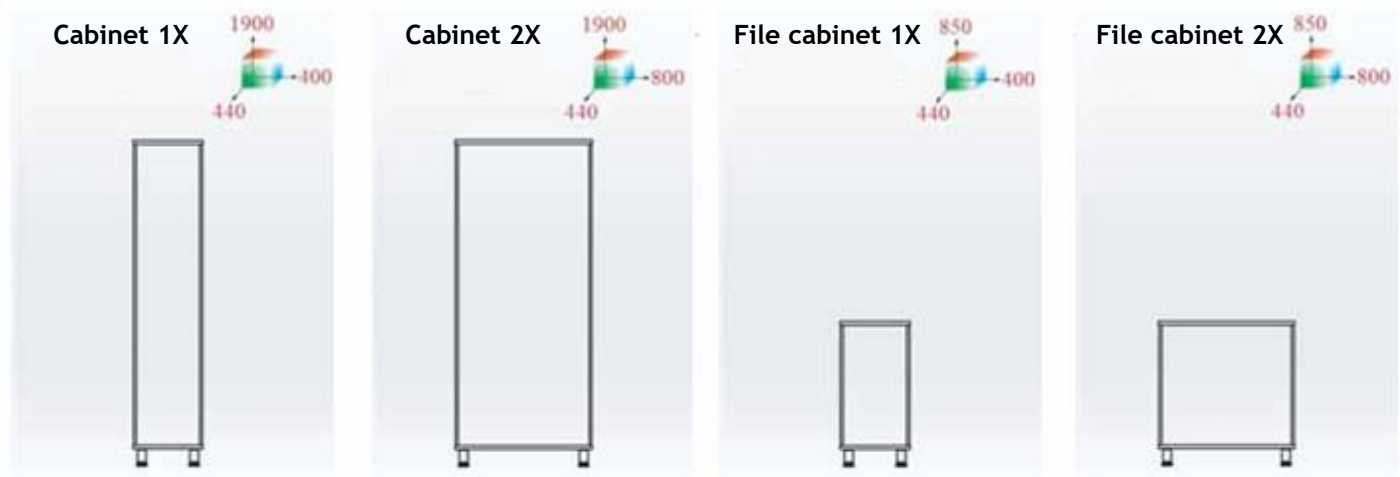
Furniture is made of laminated chipboard (type П-А, formalin emission class: E1).

Edges are processed with PVC.

All casings rest on reinforced adjustable supports 100 mm in height.

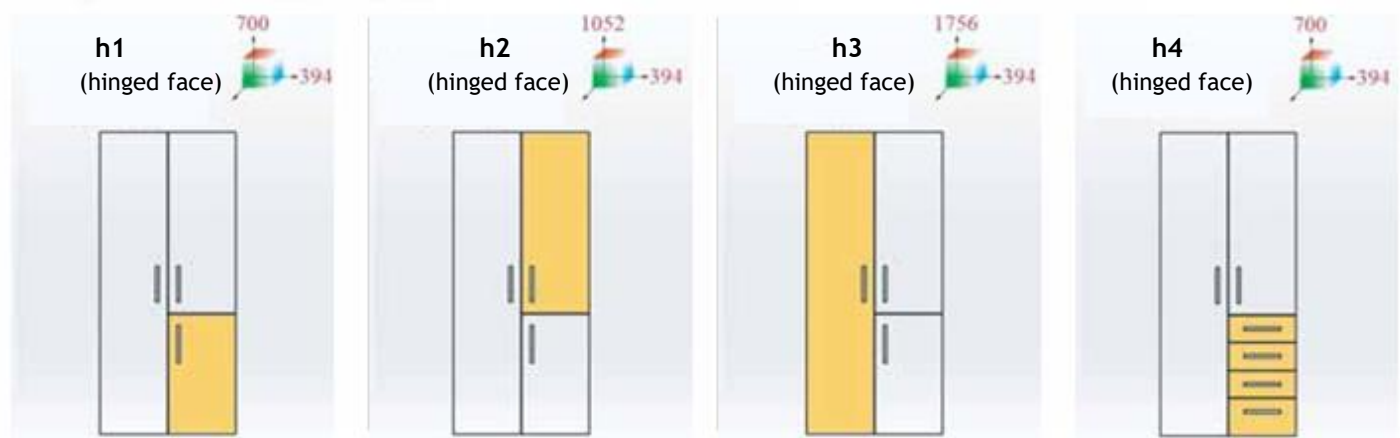
Items are composed of basic frame, on which there are installed different configurations of front faces, shelves and separating barriers (depending on purpose and tasks to be performed by furniture the configuration is to be defined by the end user).

## Basic frame versions



Basic frame consists of side walls, rear panel that is inserted into a groove (material: laminated chipboard, 16 mm, PVC edge, 0.5 mm, color: grey), top cover and bottom (material: laminated chipboard, 22 mm, anti-collision PVC edge, 2 mm). Color is aligned with front face color.

Front face versions:

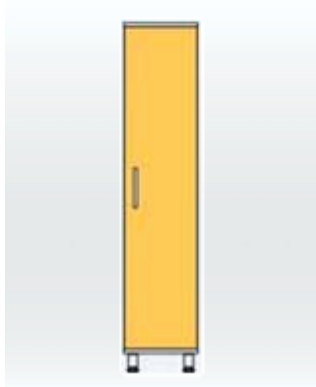


Hinged front faces are available in 2 fabrication material versions:

- 1) Laminated chipboard, 16 mm, anti-collision PVC edge, 2 mm (front face color: to be defined by end user)
- 2) Glass, 5 mm (transparent, tinted, cloudy)

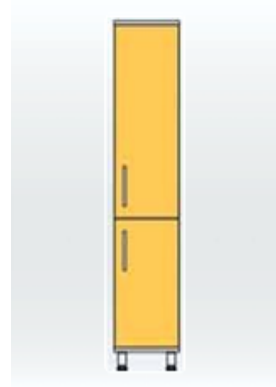
Hinged front faces are to be installed on four-pivot hinges.

# Configuration versions for 1X series



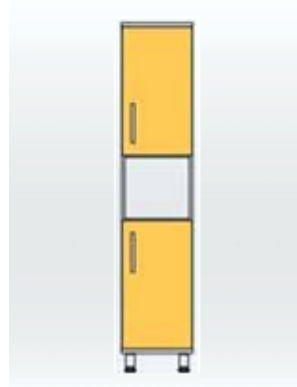
*Cabinet 1x V1*

Front face - h3



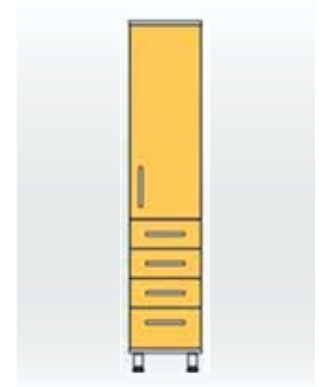
*Cabinet 1x V2*

Top front face - h2  
Bottom front face - h1



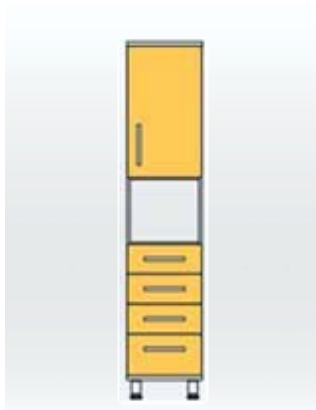
*Cabinet 1x V3*

Top front face - h1  
Bottom front face - h1



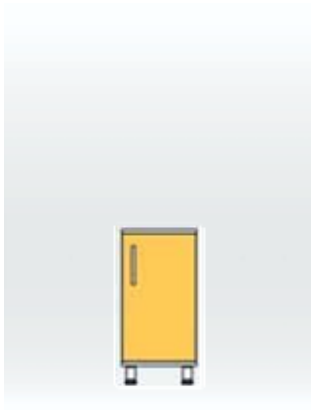
*Cabinet 1x V4*

Top front face - h2  
Bottom front face - h4



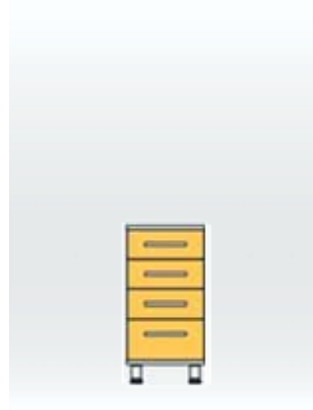
*Cabinet 1x V5*

Top front face - h1  
Bottom front face - h4



*File cabinet 1x V1*

Front face - h1



*File cabinet 1x V2*

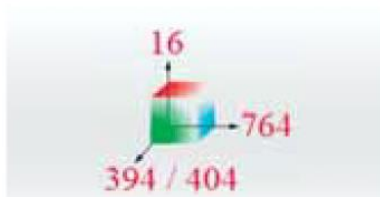
Front face - h4

Pullout drawers and front faces are made of laminated chipboard, 16 mm, and anti-collision PVC edges, 2 mm. A unit consists of three drawers 125 mm in depth and one enlarged one 190 mm in depth (in opening). Drawers are based on metaboxes of 87 and 150 mm accordingly.

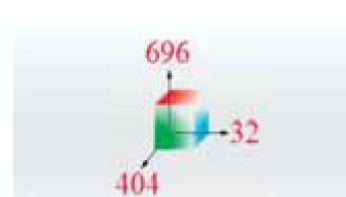
Drawers, hinged front faces and shelves referring to the same group are unified.



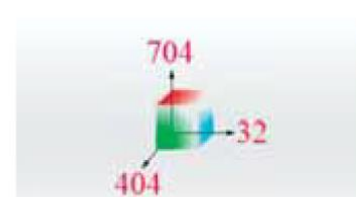
*Shelves/ ties for 1x series*



*Shelves/ ties for 1x series*



*Vertical barriers for cabinets 2x*



*Vertical barriers for file cabinets 2x*

# Configuration versions for 2X series



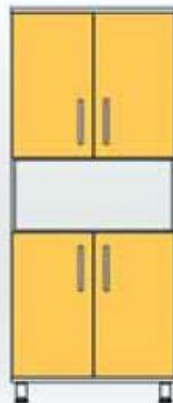
*Cabinet 2x V1*

Front face - h3, h3



*Cabinet 2x V2*

Top front face - h2, h2  
Bottom front face - h1, h1



*Cabinet 2x V3*

Top front face - h1, h1  
Bottom front face - h1, h1



*Cabinet 2x V4*

Top front face - h2, h2  
Bottom front face - h4, h4



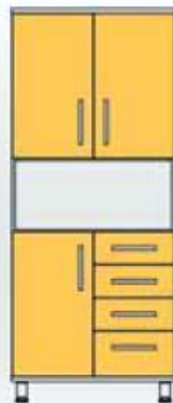
*Cabinet 2x V5*

Top front face - h1, h1  
Bottom front face - h4, h4



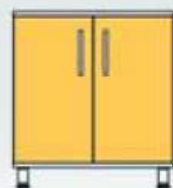
*Cabinet 2x V6*

Top front face - h2, h2  
Bottom front face - h1, h4



*Cabinet 2x V7*

Top front face - h1, h1  
Bottom front face - h1, h4



*File cabinet 2x V1*

Front face - h1, h1



*File cabinet 2x V2*

Front face - h1, h4



*File cabinet 2x V3*

Front face - h4, h4

# Product line



Cabinet Ш2.01  
Type 1



Cabinet Ш2.02  
Type 1



Cabinet Ш2.03  
Type 1



Cabinet Ш2.04  
Type 1



Cabinet Ш2.01  
Type 2



Cabinet Ш2.02  
Type 2



Cabinet Ш2.03  
Type 2



Cabinet Ш2.01  
Type 2



Cabinet Ш2.02  
Type 3



Cabinet Ш2.02  
Type 4



Cabinet Ш2.02  
Type 5



Cabinet Ш2.02  
Type 5





Cabinet Ш2.02  
Type 7



Cabinet Ш2.02  
Type 8



Cabinet Ш1.01  
Type 1



Cabinet Ш1.01  
Type 2



Cabinet Ш1.02  
Type 1



Cabinet Ш1.02  
Type 2



Cabinet Ш1.03  
Type 1



Cabinet Ш1.03  
Type 2



Cabinet Ш1.02  
Type 3



Cabinet Ш1.02  
Type 4



Cabinet Ш1.04  
Type 1



Cabinet Ш1.01  
Type 3



## File unit T 2.02, type 1

- ◆ Basic casing: file unit 2x;
- ◆ Front face versions: left-hand - h1, right-hand - h4;
- ◆ Vertical barrier: for file cabinets 2x;
- ◆ Shelf: for 1x series;

# Product line



*File cabinet T2.01*

Type 1



*File cabinet T2.01*

Type 2



*File cabinet T2.02*

Type 1



*File cabinet T2.03*

Type 1



*File cabinet T1.01*

Type 1



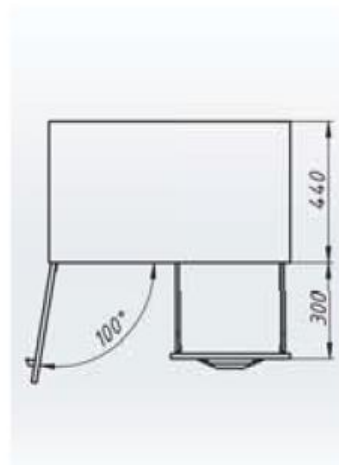
*File cabinet T1.01*

Type 2



*File cabinet T1.02*

Type 1



*Front face opening scheme*

## Color scheme for laminated chipboard



Grey



Smoky oak



Natural beech



Marmara nutwood



Aqua



Green



Ivory



Lemon

# Modular storage systems



## Advantages

*Modular storage systems are purposed for outfitting of offices of hospitals and healthcare providers.*

### **CONVENIENCE**

- Supports are fitted with adjustable rests (to enable stability).

Modular design allows creating multi-section units performing numerous functions.

### **QUALITY**

- All steel components are polymer coated (color: metallic grey, IBA OXYPLAST).
- Shelf edges are processed with 2 mm PVC).

### **SAFETY**

- Stiffener supports are welded type (designed for static load up to 300 kg).
- Lengthwise stiffeners are considered for avoiding shelves deflection.

**Working surface material:** laminated chipboard, 16 mm (type П-А, formalin emission class: E1).

**Bearing system:** steel frame with antimicrobial polymer coating.

## Document storage racks



*Document rack Cm/I-1w*

Dimensions:

1875x550x865 mm

This item consists of two closing supports and five shelves.



*Document rack Cm/I-2w*

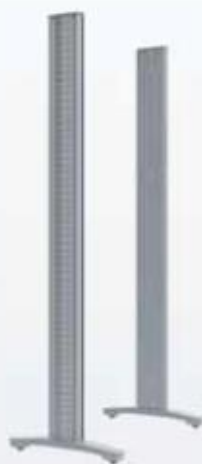
Dimensions:

1875x550x865 mm.

This item consists of two closing supports, hinged cabinet and three shelves.

The following front faces are available:

- lam. chipboard, 16 mm (2 mm PVC edge)
- Glass, 5 mm (clouded)



*Closing support*

This item consists of welded frame, structural panel and face cover.

Mounting holes spacing (for shelves fastening) is 5 x 415 mm.



*Transit support*

This item is to be used as part of a unit as an adjacent units' support.

Consists of a welded frame and two structural panels.



*Rack shelf*

Dimensions:

750x350x55 mm.

Shelves are made of laminated chipboard, 16 mm, fitted with length-wise steel stiffener 2 mm in thickness. Shelf edges are processed with 2 mm PVC edge.

Allowable uniform loading to each shelf is up to 60 kg.



*Hinged cabinet*

Dimensions:

750x350x470 mm.

Cabinet is made of laminated chipboard, 16 mm, encloses with two hinged doors.

This item shall be mounted on standard shelf mounting holes.

# Modular kitchenette



## Advantages

*Modular kitchenettes are purposed for outfitting of offices of hospitals and healthcare providers.*

### **CONVENIENCE**

- Modular design maximize the usage of working space and make it more comfortable within limited office rooms. Cut-in sockets are considered in order to simplify the wiring of electric utility devices.

### **QUALITY**

- All steel components are polymer coating (color: metallic grey, IBA-OXYPLAST). Table boards, shelves and front faces are made of laminated chipboard, edges are processed with anti-collision PVC, 2 mm in thickness.

### **SAFETY**

- Stiffener supports 100 mm in height are used in this structure. Adjustment would compensate floor irregularities and enable stability.

# Modular kitchenette accessories



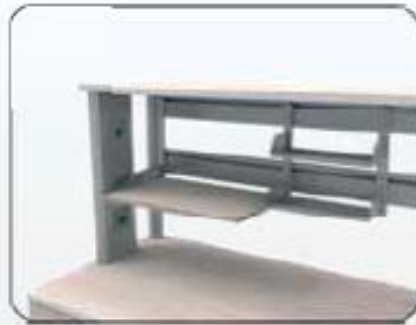
*Basic module*

Dimensions:

1500x600x710 mm.

This item consists of three units:

- separated unit with double-leaf face
- unit with four pullout drawers
- ventilated fridge compartment.



*Add-on structure*

This item is purposed for improving the functionality of a basic module by means of arrangement of hinged components (trays, shelves, brackets). Consists of welded frame, two front bars, (stiffeners) and a shelf.



*Wall-adjacent panel*

This item is to be mounted upon an add-on structure. Purposed for stiffening the structure, item is also to prevent walls from dirt, and serves as a limiter of table board and top shelf (prevents small items dropping from backside).



*Decorative panel*

This item is made of metal with polymer coating.

Encloses backside of a basic module (in case a kitchenette is not adjacent to the wall. Panel structure creates no obstacle for air circulation, which is required for normal operation of cooling equipment.



*Bar counter*

Table board material: postforming, 38 mm, with radial edge.

**Arrangement considers 2 mounting opts.:**

- 1) Fastening to a file cabinet. Table board is to be installed on a wall panel fixed on a basic module - kitchen island type. Meanwhile an additional support is to be used for stability purpose.
- 2) Fastening to the wall. Table board is to be installed on a wall panel fixed on the partition wall.



*Cooler cabinet*

Dimensions:

410x410x1600 mm.

Cabinet is made of laminated chipboard, 16 mm, with hinged doors. Purposed for standard water cooler arrangement (floor standing type).

Cabinet is installed on adjustable supports 100 mm in height.

This item can be optionally complete with plastic cups dispenser (to be negotiated during order confirmation).



**AYBOLIT TRADING COMPANY**

68 Kuznetchikhinskaya Street, Nizhny Novgorod, Russia

Zip code: 603146

Tel.: +7 (831) 417-89-98

[www.aybolit2000.ru](http://www.aybolit2000.ru)